



PROECO
PRODUCTS

Filtration Pump Instruction Manual

For Models FP-1750, FP-2300 & FP-3200



ProEco Products
www.proecoproducts.com
info@proecoproducts.com

Canada (250) 275-4830
United States (503) 922-2254

450 Conn Road
Lumby, BC Canada V0E 2G4

IMPORTANT SAFETY INSTRUCTIONS

Read all instructions before using this product. When using an electrical appliance, basic precautions should be observed, including the following:

WARNING:

- Unplug from outlet when not in use and before cleaning or maintenance.
- Do not operate with a damaged power cord.
- Do not pull or carry the product by the power cord.
- If the power cord is damaged it must be repaired by a qualified repair station.
- Use the product only for its intended use.
- Close attention is necessary when used by or near children.
- Store product in a dry place when not in use.
- Only connect unit to a properly grounded outlet (See Grounding Instructions).
- Use only manufacturer's attachments and spare parts.

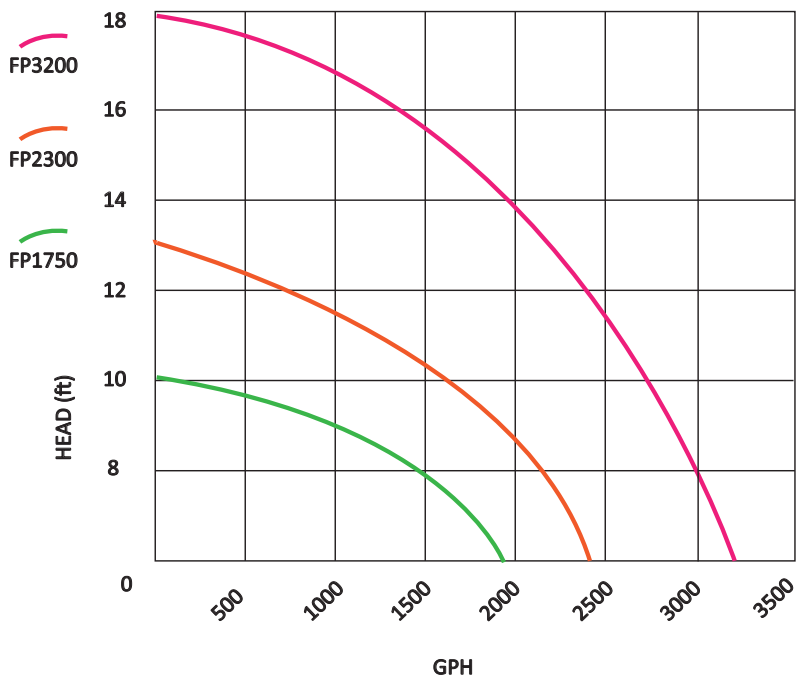
Grounding Instructions

This product must be connected to a grounded wiring system. If it should break down or malfunction, grounding provides a safe path of least resistance for electrical current, reducing the risk of electrical shock. The cord for this unit has an equipment-grounding conductor and a grounding plug. It must be plugged into an outlet that is properly installed and grounded in accordance with all local codes and ordinances. Improper connection of the equipment-grounding conductor can result in electrical shock. Check with a qualified electrician if you are unsure if the outlet is properly grounded. Do not modify the plug provided with the product or use any type of plug adapter.

SPECIFICATIONS

| Model | Flow Rate (gph) | Power (watts) | Outlet (in) | Max. Head (ft) | Dimensions (in) | Cable Length (ft) |
|---------|-----------------|---------------|-------------|----------------|-----------------|-------------------|
| FP-1750 | 1750 | 110 | 1 1/2 | 10 | 12 x 10 x 6 | 20 |
| FP-2300 | 2300 | 150 | 1 1/2 | 13 | 12 x 10 x 6 | 20 |
| FP-3200 | 3200 | 200 | 1 1/2 | 18 | 12 x 10 x 6 | 20 |

PUMP FLOW CHART



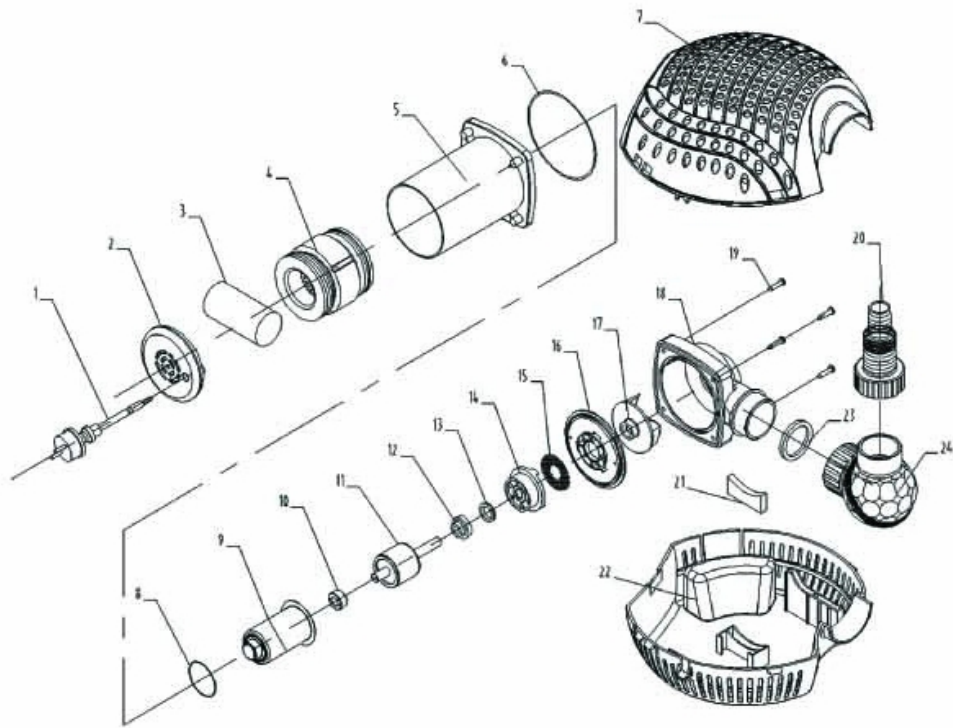
INSTALLATION

- Unpack the pump and inspect it for damage.
- Remove any shipping or packing material from the intake or outlet of the pump.
- Install pump in a secure and stable location insuring that it will be submerged at all times.
- Connect the outlet to properly sized plumbing.
- Connect the power cable to a properly grounded circuit.
- Test the pump to insure that it is operating properly.

TROUBLESHOOTING GUIDE

| PROBLEM | POSSIBLE CAUSE | SOLUTION |
|---|--|--|
| Pump does not run | <ul style="list-style-type: none"> • Circuit breaker turned off • No power at the receptacle | <ul style="list-style-type: none"> • Turn on circuit breaker • Repair power line and or receptacle |
| Pump runs but does not deliver water | <ul style="list-style-type: none"> • Problem with a check valve • Pump discharge is plugged • Pump is air locked | <ul style="list-style-type: none"> • Make sure that the check valve is installed properly • Remove any debris from the impeller or volute • Start and stop pump several times |
| Pump runs but only a small flow of water is delivered | <ul style="list-style-type: none"> • Pump discharge is plugged • Pump is air locked | <ul style="list-style-type: none"> • Remove any debris from the impeller or volute • Start and stop pump several times |
| Circuit breaker trips when pump starts | <ul style="list-style-type: none"> • Pump impeller is clogged with debris • Circuit breaker is too small • Electrical short circuit in power supply | <ul style="list-style-type: none"> • Remove any debris from the impeller or volute • Install new 15 amp breaker • Check and replace any defective power cable |
| Pump runs for a short time and then stops | <ul style="list-style-type: none"> • Pump impeller is clogged with debris | <ul style="list-style-type: none"> • Remove any debris from the impeller or volute |

| No. | Name |
|-----|----------------------|
| 1 | Plug and power cable |
| 2 | Rear cover |
| 3 | Capacitor |
| 4 | Stator |
| 5 | Pump housing |
| 6 | O-Ring Seal |
| 7 | Top cover |
| 8 | O-Ring Seal |
| 9 | Motor bush |
| 10 | Bearing |
| 11 | Rear cover |
| 12 | Rubber locating ring |
| 13 | Graphite loop |
| 14 | Bearing base |
| 15 | Strainer screen |
| 16 | Front cover |
| 17 | Impeller |
| 18 | Scroll case |
| 19 | Screw |
| 20 | Adapter |
| 21 | Rubber cushion block |
| 22 | Base |
| 23 | Rubber washer |
| 24 | Ball joint |



Limited Warranty

This PROECO product is covered by a 3-year limited warranty by PROECO PRODUCTS. The limited warranty period begins from the date of purchase and covers material and manufacturing defects or failure of the product to operate as specified by PROECO PRODUCTS during the duration of the limited warranty period.

This limited warranty does not cover failure or problems related to:

- Improper installation, see this manual for proper installation procedures.
- Modification of the product in any way including attempts to repair the product by someone other than a PROECO PRODUCTS trained and authorized repair technician.
- Failure to follow proper safety, care and maintenance guidelines as outlined in this manual.

It also does not cover those parts of the product that are subject to normal wear and tear during usage of the product, such as:

- Impellers on pumps
- Filter pads and filter medium in filters
- Lamps in lights and UV clarifiers

PROECO PRODUCTS's sole liability shall be to replace or repair the product covered by this limited warranty. PROECO PRODUCTS shall not be liable for any consequential damage to any other part of the water garden, pond, water feature, landscape, structure, or the contents of any structure where the product is located or used including no liability for damage or harm to fish, animals, or plants in or around the water garden, pond or water feature.

THE EXPRESS WARRANTIES SET FORTH HEREIN ARE THE ONLY WARRANTIES WITH RESPECT TO THE PRODUCTS, AND THE REMEDIES SET FORTH HEREIN ARE THE EXCLUSIVE REMEDIES IN THE EVENT OF A BREACH OF SUCH WARRANTIES. PROECO PRODUCTS EXPRESSLY DISCLAIMS ANY IMPLIED WARRANTY OF MERCHANTABILITY OR FITNESS FOR A PARTICULAR PURPOSE. PROECO PRODUCTS SHALL NOT BE LIABLE UNDER ANY CIRCUMSTANCES FOR INCIDENTAL OR CONSEQUENTIAL DAMAGES OF ANY NATURE, FOR ANY BREACH OF SUCH WARRANTIES OR OTHERWISE. Some states do not allow the exclusion or limitation of incidental or consequential damages, to the above limitation may not apply to you.

Should your PROECO PRODUCTS product be defective or fail under the terms of this limited warranty, you should return the product to your PROECO PRODUCTS dealer, along with your original receipt of purchase and any other limited warranty documentation you have, for replacement or repair. Should you have any question about this limited warranty, please contact PROECO PRODUCTS at info@proecoproducts.com